

2023 - 2024

# BUCKINGHAM ELEMENTARY

## *School Plan Summary*



## OVERVIEW



Buckingham Elementary School is in the Buckingham Heights neighbourhood of Burnaby, B.C. We are a K-7 school with approximately 260 students. At Buckingham, our students have varied strengths, interests and abilities. We value the cultural diversity of our school and recognize that this is one of our many assets. We believe in creating a supportive, inclusive and caring learning community where everyone feels safe, valued and welcomed.



The Buckingham School Plan was developed in consultation with the various stakeholders in our school community. Our school goals align with the Burnaby School District strategic priorities and are continually monitored for progress through analyzing school-wide data.

### FEEDBACK?

*School community input is valued and important to us. If you have any feedback or suggestions, please contact Vicki Moro at [Vicki.Moro@burnabyschools.ca](mailto:Vicki.Moro@burnabyschools.ca)*



*Through assessing the learning of our students and continued professional conversations, we have determined the following learning goal:*

## **MATHEMATICS GOAL**

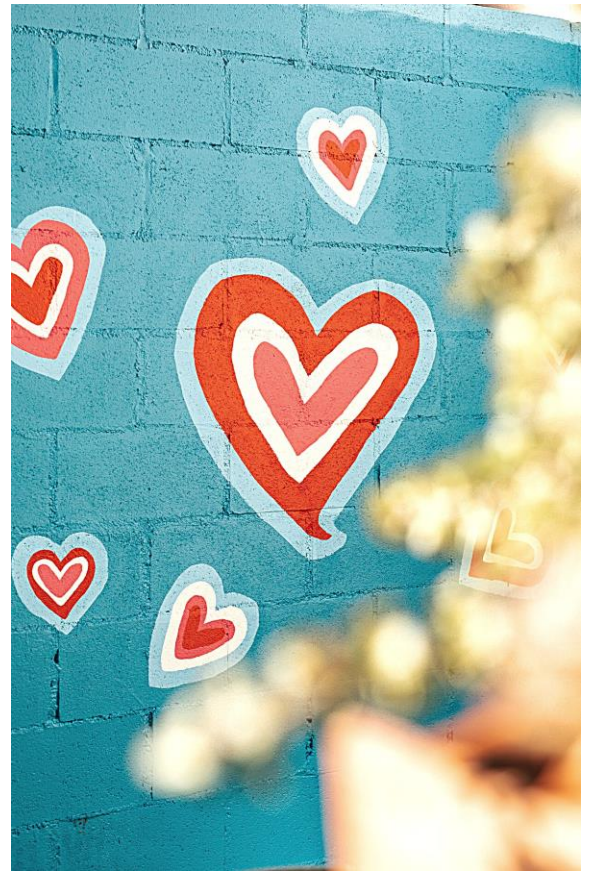
*To build competence in the students' ability to explain mathematical thinking*

Our goal is that students move beyond simply knowing the right answer to learning how to question, explore, visualize, conjecture, explain, generalize, criticize, justify, and prove thinking in Mathematics. It is this set of core proficiencies that students need in order to grow as mathematicians. Becoming adept at explaining mathematical thinking will ensure continued future success in math.

*This goal falls under the Thinking Core Competency of the BC Curriculum including Critical and Reflective Thinking:*

Critical and Reflective Thinking encompasses a set of abilities that students use to examine their own thinking and that of others. This involves making judgments based on reasoning, where students consider options, analyze options using specific criteria, and draw conclusions.

People who think critically and reflectively are analytical and investigative, willing to question and challenge their own thoughts, ideas, and assumptions and challenge those of others. They reflect on the information they receive through observation, experience, and other forms of communication to solve problems, design products, understand events, and address issues. A critical thinker uses their ideas, experiences, and reflections to set goals, make judgments, and refine their thinking.





## **SOCIAL-EMOTIONAL LEARNING FOCUS TO SUPPORT STUDENT LEARNING**

*To develop a deeper understanding of our needs and how to meet our needs in appropriate ways.*

Understanding our needs, whether they are personal, social, or academic, and how to meet these needs appropriately are important life skills that will help build strong classroom communities and teach students to be responsible citizens.

*This focus falls under the Personal and Social Core Competency of the BC Curriculum including:*

### **PERSONAL AWARENESS AND RESPONSIBILITY**

Encouraging people to make constructive and ethical decisions and act on them. People who are personally aware and responsible demonstrate self-respect, persevere in difficult situations, and exercise responsibility. They understand that there are consequences for their decisions and actions.

A personally aware and responsible individual takes steps to ensure their well-being, sets goals and monitors progress, regulates emotions and manages stress, and recognizes and advocates for their own rights.

### **SOCIAL AWARENESS AND RESPONSIBILITY**

Involves the awareness, understanding, and appreciation of connections among people, including between people and the natural environment. Social Awareness and Responsibility focuses on interacting others and the natural world in respectful and caring ways.

People who are socially aware and responsible contribute to the well-being of their social and physical environments. They support the development of welcoming and inclusive communities, where people feel safe and have a sense of belonging.